

ITEM NO.	PART NUMBER	DESCRIPTION	QTY.
1	01-2039	SCREW, HHM , 3/8-24 X 1	1
2	20-0102	NUT, POP. GUIDE RET., 2", ALUM	1
3	20-0103	GUIDE, POPPET, 2" NPT, 2-W	1
4	20-1549	BODY, 2" NPT, 2-W, NO	1
5	20-1959	SPRING, POPPET	1
6	20-1967	HOUSING, POPPET	1
7	20-1968	GUIDE, POPPET, 2" NPT, 2-W	1
8	SEE TBL (SM)	POPPET SEAT	1
9	SEE TBL (SM)	O-RING	1

SEAL MATERIAL OPTIONS (SM)			
CODE	MATERIAL	O-RING	POPPET SEAT
STD	BUNA - N+VITON	04-01-230	20-0630
-25	MOLY CTD BUNA		
-26	VITON	04-09-230	20-0630
-28	VITON+TEFLON		
-29	EPR		
-32	TEF+EPR+VIT		

# 550132 - SM

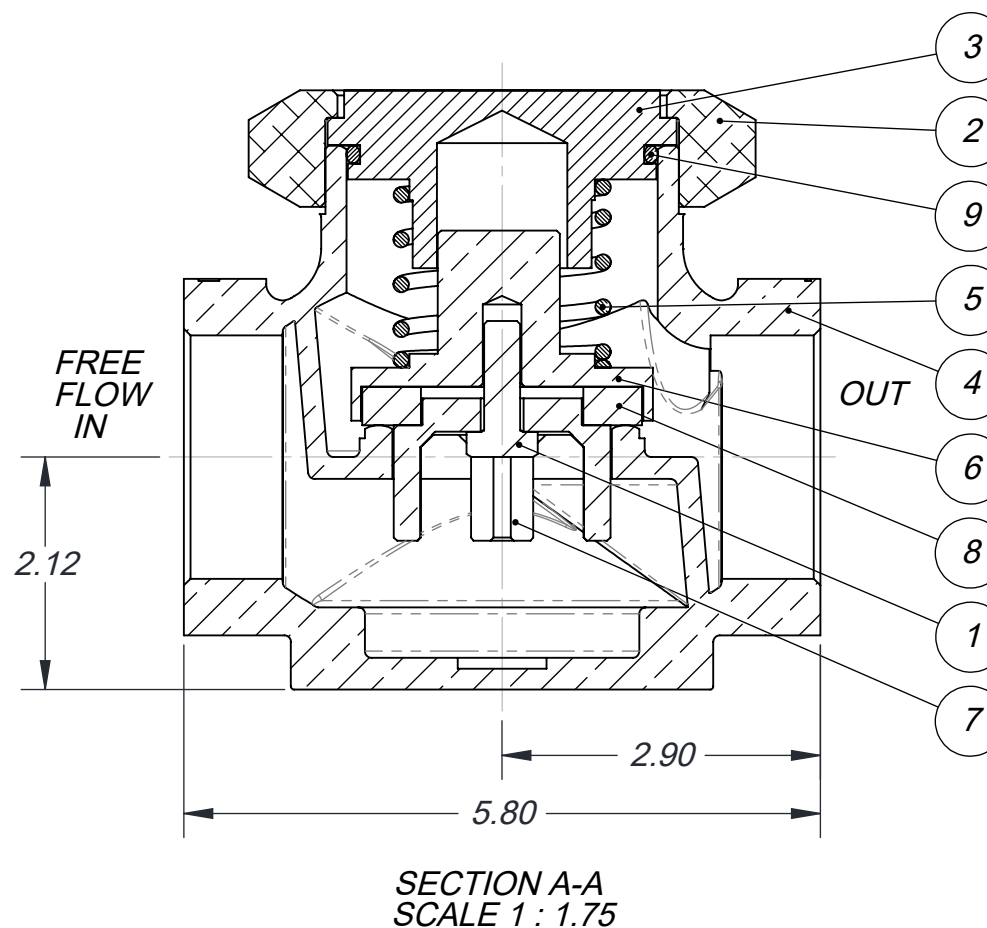
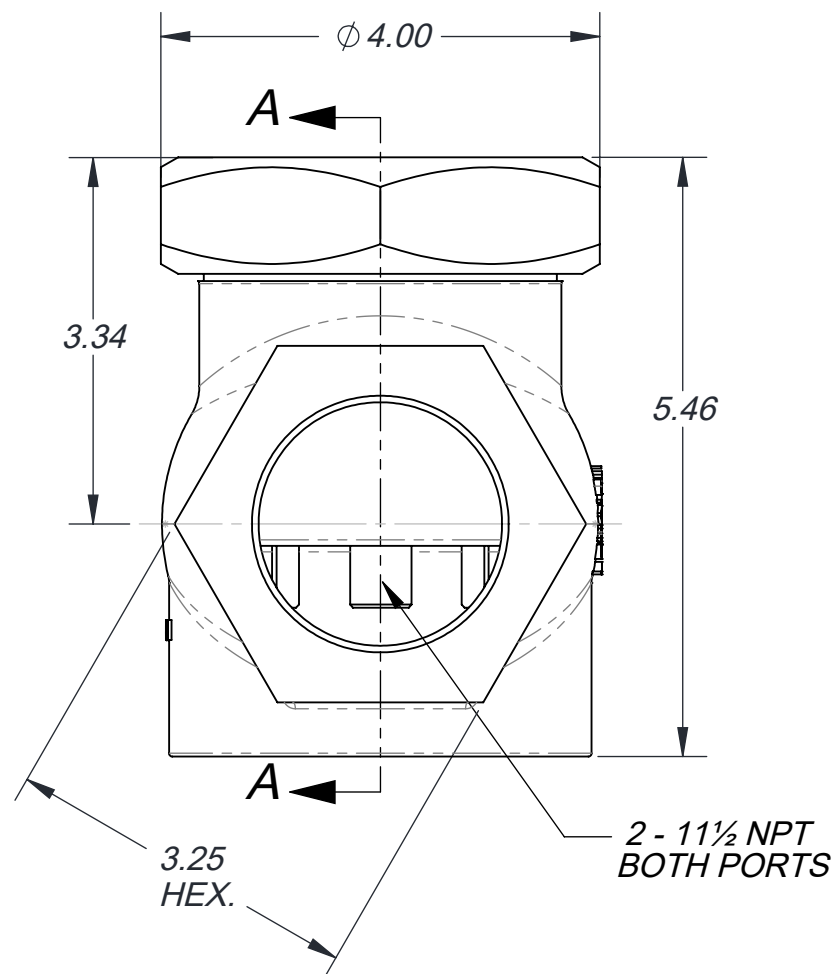
# B550132

**NOTES:**

- PARTS IN HEXAGON BOX ARE INCLUDED IN BOTH ASSEMBLY AND REPAIR KITS. SEE TABLE (R/K) FOR REPLACEMENT PART NO.
- PRESSURE RATING: 0 - 500 PSI
- TEMP. RANGE: -30°F TO 225°F STD. (300°F OPT. SEALS)
- USE LOCTITE 222MS ON ITEM 1 AND TORQUE TO 65 LBS-IN.

REPAIR KITS (R/K)	
MATERIAL	PART NO.
BUNA - N	25-0105
VITON	25-0905

THIS DOCUMENT AND ITS CONTENTS ARE THE PROPERTY OF LEXAIR, INC. THEY ARE FURNISHED TO YOU ON THE FOLLOWING CONDITIONS: NO RIGHT OR LICENSE IN RESPECT OF THIS DOCUMENT OR ITS CONTENTS IS GIVEN OR WAIVED IN SUPPLYING THE DOCUMENT TO YOU. THIS DOCUMENT OR ITS CONTENTS ARE NOT TO BE USED OR TREATED IN ANY MANNER INCONSISTENT WITH THE RIGHTS OF LEXAIR, INC. OR TO ITS DETRIMENT AND ARE NOT TO BE COPIED, REPRODUCED, OR DISCLOSED OF, EXCEPT WITH ITS PRIOR WRITTEN CONSENT.



## REVISIONS

- A** REDRAWN TO CURRENT ENGINEERING STANDARDS  
ECL: 99238 11-11-99 JDR
- B** ADDED TORQUE SPEC. TO ITEM 8 AND REPLACED THREAD SEALANT WITH LOCTITE 222MS
- C** REDRAWN TO CURRENT ENGINEERING STANDARDS  
ECL: 21036 06-24-21 TES

Tolerances Unless Otherwise Specified:		
TYPE	FINISHED	AS CAST
DEC .00	± .015	± .030
DEC .000	± .005	± .010
FRACTIONAL	± 1/64	± 1/32
ANGLES	± 1/2°	± 1°

MATERIAL SPEC.  
SEE TABLE

PROCESS SPEC.

PC. NO. 550132

MADE FROM

**2" NPT CHECK VALVE**

**B 550132**

CAD FILE 550132.drw

**Lexair, Inc.**  
2025 Mercer RD, Lexington, Kentucky 40511

DRAWN	CHECKED	APRVD.
JDR	MFM	MFM
11-11-99	01-28-00	01-28-00

SHEET NO. 1 of 1 SHEETS  
SCALE 1:1  
APPROX. WT. 12.499 lbs.